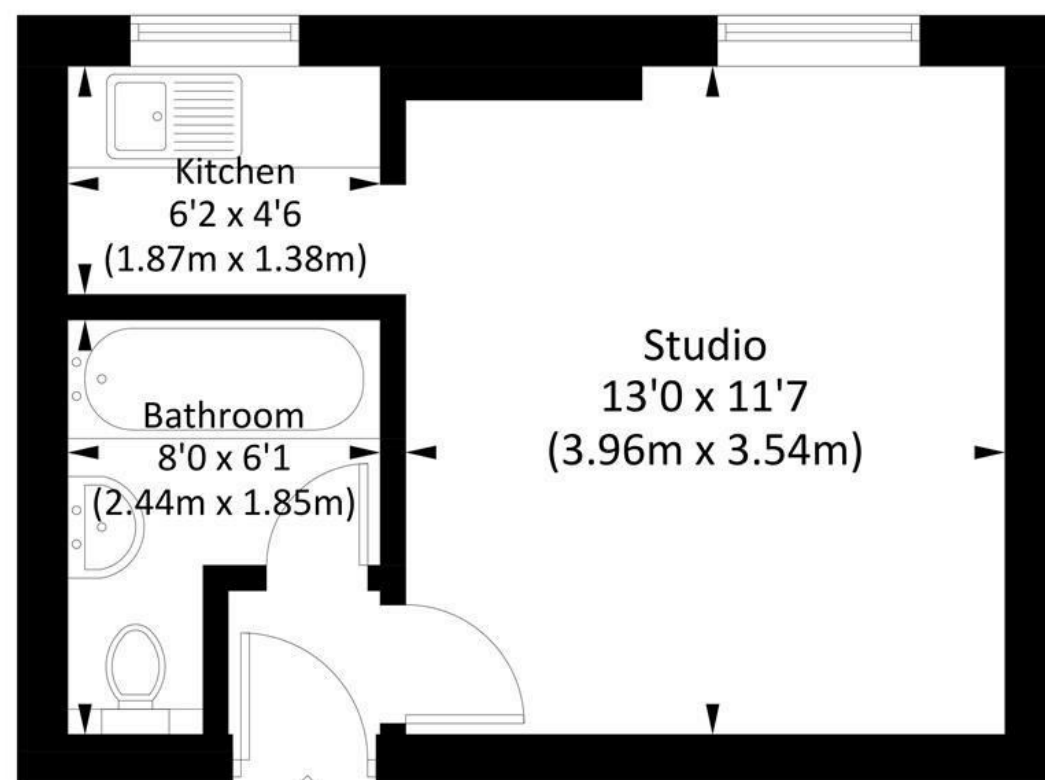


WARREN

The Putney Estate Agent

West Hill, SW15

Approx. gross internal area 237 Sq Ft. / 22.0 Sq M



First Floor

Illustration for identification purposes only, measurements are approximate, not to scale. FloorplansUsketch.com © 2023 (948481)

DISCLAIMER•These particulars are intended to give a fair and substantially correct overall description for the guidance of intending purchasers and do not constitute an offer or part of a contract. Prospective purchasers and/or lessees ought to seek their own professional advice.

•All descriptions, dimensions, areas, references to condition and necessary permissions for use and occupation and other details are given in good faith and are believed to be correct, but any intending purchasers should not rely on them as statements or representations of fact, but must satisfy themselves by inspection or otherwise as to the correctness of each of them.
•All measurements are approximate.



194 Upper Richmond Road, London SW15 2SH Also at: 139 Lower Richmond Road, London SW15 1EZ

E: sales@warrenputney.co.uk T: 020 8780 1100 F: 020 8780 0872

WARREN

The Putney Estate Agent

West Hill, London, SW15

A lovely studio apartment on the 1st floor of this period house located within easy access of Putney and Wandsworth. Offered on an unfurnished basis and benefiting from off-street parking and a well maintained communal garden, the accommodation comprises a bright studio room with wardrobes and secondary glazing overlooking the communal garden, fitted kitchen and bathroom with shower over the bath. This superb flat is perfectly located for numerous transport links and many local amenities and is available from the late April 2026.



- STUDIO FLAT
- BATHROOM
- COMMUNAL GARDEN
- GREAT LOCATION
- COUNCIL TAX BAND C
- FITTED KITCHEN
- SECONDARY GLAZING
- OFF-STREET PARKING
- EPC E

Per Month
£1,150 Per Month

E: sales@warrenputney.co.uk

T: 020 8780 1100 F: 020 8780 0872

warrenputney.co.uk

